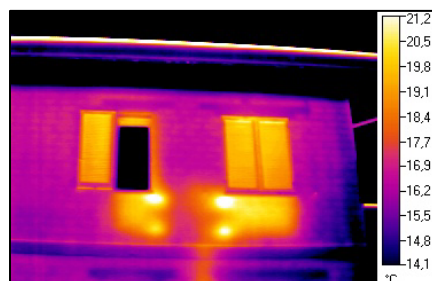
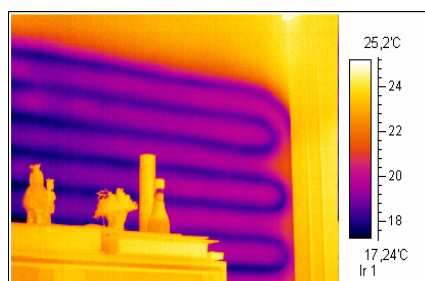


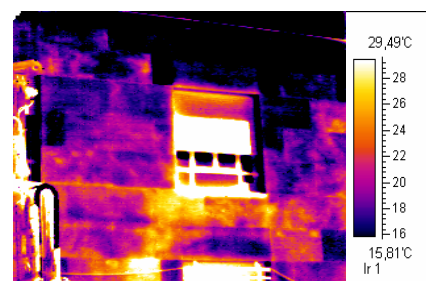
DIAGNOSI TERMOGRAFICA ALL'INFRAROSSO NEL SETTORE EDILE



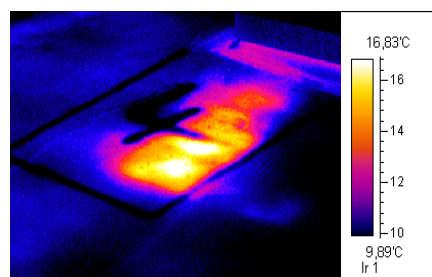
DISPERSIONE
ENERGETICA EDIFICI



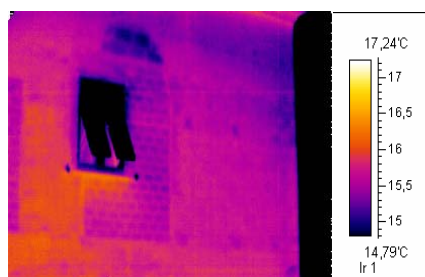
RAFFRESCAMENTO PARETE



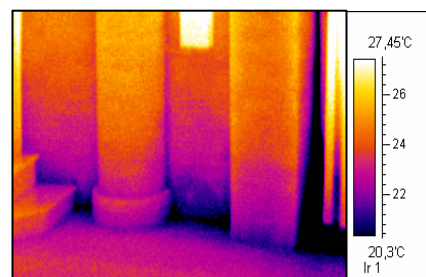
DISTACCHI DI COPERTURE E
INTONACO IN FACCIA



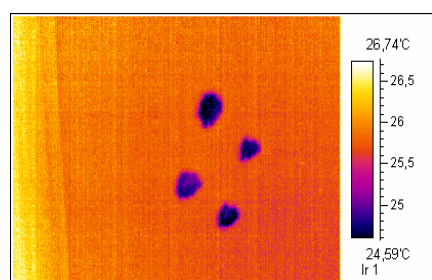
INFILTRAZIONE ACQUA DA
IMPERMEABILIZZAZIONE TETTI



TESSITURA MURARIA E
TAMPONATURE



UMIDITA' DI RISALITA



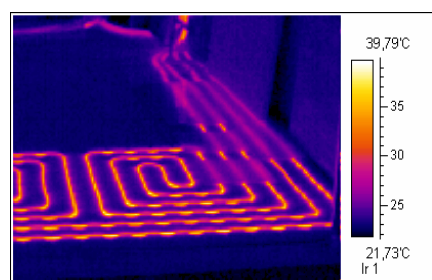
INDIVIDUAZIONE MUFFE



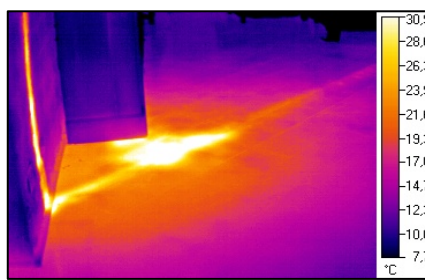
CAPPOTTO TERMICO



PONTI TERMICI



RISCALDAMENTO A PAVIMENTO



RICERCA PERDITE



ORDITURA SOLAI